



November 2020
4-H Newsletter

From your County Extension Agent

We are already in November and is getting closer to our livestock show and this year is very different with no 4-H Club meetings or community services or any other activity, because we are following the local authority's health ordinances. Currently the most important thing is to stay safe at home if you can and take care of your animal project. Exercise your animal the most you can feed it properly and if you can add some feed supplement it will help some. This month of November I will plan for a zoom meeting directed by the Maverick 4-H Council and I will email you the link later. If you have your animal project for the livestock show within the city limits, contact your 4-H Club manager or the County Agent and we can email you the permit. The City of Eagle Pass Code Enforcement Department is already observing the livestock show animals and they might ask you for the permit. In this 4-H Newsletter I am including a flyer of an activity that you can participate online at home, but you need to tell your parents to call the phone number in the flyer and let me know also. You can earn up to \$ 150.00 after completing all the steps of the program and it can help you improve your record assisting you for example to earn a scholarship. This year we validated 77 goats in two sessions on October 14th and 17th and 75 lambs in two sessions on October 21st and 24th following the local authorities' ordinances. It was a drive through method with minimum contact of the people.

Oscar Galindo

County Extension Agent
Agriculture and
Natural Resources
County Coordinator
4-H Coordinator
Texas A&M AgriLIFE
Extension Service
District 12
ogalindo@ag.tamu.edu
maverick@ag.tamu.edu
Webpage maverick.agrilife.org
Follow us on Facebook at [Maverick](#)
[County Extension Office](#)

Vacant

County Extension Agent
Family Consumer Health
Cooperative Extension
Program
Prairie View A&M
University

Gloria P Cortez

Secretary
2350 East Main Street
PO Box 616
Eagle Pass, Texas 78852
Phone 830-773-5064
Fax 830-773-3450
maverick@ag.tamu.edu

Teen Talk Study



IF YOU ARE:

14-17 years old

AND:

Speak English or Spanish

Live in Maverick county in Texas

Have a parent willing to participate

Have Internet access and an email address

Please ask your parent to call!

Researchers from the USDA/ARS Children's Nutrition Research Center at Baylor College of Medicine are recruiting families to help us understand:

- What affects rural teens' eating & physical activity choices
- How technology can help rural teens make healthy choices

STUDY ACTIVITIES INCLUDE:

Online surveys

Telephone interviews

Taking pictures of situations that affect your eating/physical activity choices

Families will be financially compensated for their time.

FOR MORE INFORMATION, CONTACT:
Chishinga Callender, 713-798-0506
Noemi Islam, 713-798-7002
TeenTalk@bcm.edu



Texas will be hosting the 2024 National County Agricultural Agents Association Convention and we will need funds to conduct the event. We are conducting a raffle to obtain funds so if you are interested let me know specially if you like firearms.

No. 0721

Name: _____

Phone: _____

E-mail: _____



District 12
TCAAA
Gun Raffle

Donation: \$20/ticket

RAFFLE ITEMS

1. CZ 557 American 6.5
Creedmore 24"
2. Beretta A300 Outlander
12 ga 3" 28" Timber
3. Henry Long Range
Lever Action .243 Win
4. CZ 457 American Walnut
17 HMR 21" HB Walnut
5. Weatherby Orion
over/under 12 ga.
28 in. Gloss Walnut
6. Remington 700 SPS Tactical
308 20" Hogue Stock
7. Browning Buck Mark Bull 22LR
4" Matte Blue

Drawing: Friday, December 18, 2020

Winners must be 18 years of age and
pass FFL background check.

No. 0721



Major Livestock Shows

If you are planning to attend any of the major livestock shows, **please follow this instructions.**

1. The deadline to register is December 1st but I need all your paperwork and money by November 20th that is before Thanksgiving. The Houston Livestock Show entry must be notarized.
2. I do not accept checks or money orders only cash and the exact amount because I won't have any change. The amount included should be for the personal passes and the car passes also.
3. Make sure you have the entry form completed before you visit my office. With the SS# a valid/current Quality Counts number the address the phone number also a valid email address. The Ethics Policy form I need it with all the signatures included and dated. You can print the Entry forms and the Ethics Policy form by visiting any livestock show webpage.
4. The Maverick County Extension Office is not responsible if any major livestock show is cancelled .

The 2020 MCJLS Lamb and Goat Validation for the 4-H and FFA kids. It was a drive trough method to follow the local authority's health ordinances.





Guadalupe County Trophy Hunt

Friday November 6

Diamond F Arena
5835 Old Seguin Luling Road
Seguin, Texas

Lamb and Goat Show

WEIGHT CARDS DUE 6:00 PM FRIDAY -- SHOWS STARTS 6:30 PM

SCALES ARE AVAILABLE GRAND AND RESERVE WILL BE WEIGHED
BACK 5LBS LAMBS AND 4LBS GOATS



TROPHIES FOR BREED CHAMPIONS
BUCKLES FOR GRAND AND RESERVE CHAMPIONS,
AND SHOWMANSHIP
(PEEWEE, JUNIOR, INTERMEDIATE, SENIOR)

OLD TIMERS SHOWMANSHIP AND GUADALUPE SHOOTOUT

CONTACT INTO:

TILDEN COX 830-660-0176

AUDRA SCHULZ 830-660-6351

on Facebook @guadtrophyhunt

\$25 ENTRY FEE / \$10 SHOWMANSHIP

JUDGES TBA

SHOW OUT OF TRAILERS

CONCESSIONS

DOGS MUST BE ON A LEASH

NO GLASS BOTTLES

NO HAY IS ALLOWED IN THE
ARENA

RV HOOKUPS \$20/ STALLS \$20

PRIZES PRIZES PRIZES! 50% CASH PAYBACK

**WE WILL BE AWARDING CASH, TROPHIES, RIBBONS, BUCKLES, TACK
AND MORE**

RAFFLE DRAWINGS ALL NIGHT !

*Blow
& Go*

South Texas Double Trouble Prospect Show

**ONE DAY
ONLY**

Steer and Heifer Show - November 7, 2020

Cowboy Fellowship, 561 FM 3350, Jourdanton, TX 78026

Heifers Ring A Judge - Cheryl Linthicum, Steer Ring A Judge - Gerald Young,

Steer Ring B Judge - Cheryl Linthicum

WE WILL BE FOLLOWING COVID GUIDELINES

Stalling will be done off the trailer in 2020.

Entry Fees:

Ring A: \$35.00 Steer & Heifer

Ring B: \$35.00 Steers Only

Showmanship: \$5.00 Cash at Gate

Early Entry Deadline - Oct. 26, 2020

**PRE REGISTRATION IS REQUIRED DUE TO COVID
GUIDLINES**

Prizes:

Heifer Show: Buckles to Div. Champions

Prizes to Reserve Div.

Steer Show: Buckles to Breed Champions A&B

Prizes to Reserve Champions A&B

Showmanship: 3 Heifer & 3 Steer Buckles

Prizes to Reserve Champions

Hotels:

La Quinta Inn & Suites, (830) 769-3050

Hampton Inn, (830) 569-3001

Holiday Inn Express & Suites, (830) 769-3323

Best Western Plus Hotel- (830) 569-1917

Fairfield Inn & Suites - (830) 569-8656

Sleep Inn & Suites- (830) 770-0722

Heifer Show

Sat, November 7- Check in: 7:00am - 8:00am

Sat, November 7- Heifer Showmanship 8:00am

- Heifer Show following immediately after Heifer Showmanship

Steer Show

Sat, November 7- Classify/Check in: 7:00-9:00a

Sat, November 7 -Steer Showmanship 9:30am

- Steer Show following immediately after Steer Showmanship
- Steer Ring B will begin after completion of Heifer Show

*****Blow & Go Show! ***Bring Generators and Water
Hoses. For more info, please call (830) 569-0034.**

**Entries can be paid online at: A convenience
fee will be charged by eventbrite**

<https://www.eventbrite.com/e/115418113685>

+South Texas Double Trouble Prospect Show

*****One animal per entry form. This is your weight card.*****

Name: _____

Address: _____

Phone: _____

Email: _____

TJLA Member _____

School Grade: _____

STEER Breed: _____

Weight: _____

Ring A B (Please Circle. Must enter A to be eligible for Steer Ring B.)

HEIFER Breed (Ring A only): _____ Heifer Date of Birth: _____

Entry Fees: Ring A - \$35.00 Ring B - \$35.00 (Steers ONLY. Must enter Ring A to be eligible for B)

EARLY ENTRY DEADLINE OCTOBER 26, 2020

Please mail and make checks payable to: Atascosa 4-H

Council, PO Box 379, Leming, TX 78050

2020 Dimmit County Classic

Non Sanction Prospect Show

Steer, Heifer, Swine, Lamb, Goat Shows

December 5-6, 2020

Dimmit County Multipurpose Building

539 Industrial Boulevard

Carriazo Springs TX, 78834

Judge For Both Days Wayne Morse

Schedule of Events

Saturday December 5th Sheep and Goat Show

7:00-9:00a.m. Turn in All Weight Cards

10:00a.m. Lamb Showmanship (Senior, Junior, Pee Wee)

Lamb Show to Start After Showmanship

Immediately Followed by

Goat Showmanship (Senior, Junior, Pee Wee)

Goat Show will follow goat showmanship

and

Sunday December 6th, Cattle and Hogs

7:00a.m. - 9:00a.m. Turn in Weight Cards/Check Papers:

Swine, Steers and Heifers

10:00a.m. Swine Showmanship (Senior, Junior, Pee Wee)

Swine Show Starts Immediately Following Showmanship

Steer Showmanship (Senior, Junior, Pee Wee)

Steer Show

Heifer Showmanship (Senior, Junior, Pee Wee)

Heifer Show

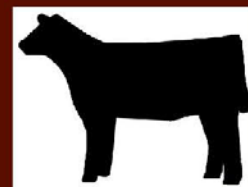
5% WEIGH BACK ON STEERS

5 LB WEIGH BACK ON SHEEP AND GOATS

ALL GRAND AND RESERVE CHAMPIONS WILL BE REWEIGHED JUDGE HAS

DISCRETION TO WEIGH ANY ANIMAL

SCALES ON GROUNDS ARE OFFICIAL NO EXCEPTIONS



Buckles

(Buckles for Showmanship, Overall
Grand Champion
& Reserve Grand
Champion)

Prizes for Breed
Champion & Reserve
Breed Champions

ENTRY FEES

\$30 per head. day of the show

(No Pre-Entries)

SHOWMANSHIP

AGE AS OF SHOW DAY

Juniors 13 & under

Seniors 14 & over

Pee Wee 2nd Grade & Under

\$10 SHOWMANSHIP AT THE GATE

JR AND SR - PEE WEE FREE

Each exhibitor is
limited to 2 wrist bands
for individuals entering
the barn.

Face covers are
required in the Barn:
No Exceptions

NO HAY ALLOWED IN BARNS
NO EXCEPTIONS!!!!

BREED FORMAT

Cattle; American, English, Exotics

Sheep, Fine Wool, Fine Wool Cross, South
Down, Medium Wool

Swine, York, Hampshire, Duroc. OPB
Cross

For More Information Contact:

The Extension Office

830-876-4216

Staying Safe at 4-H Activities

Quick tips on minimizing Covid-19 virus transmission



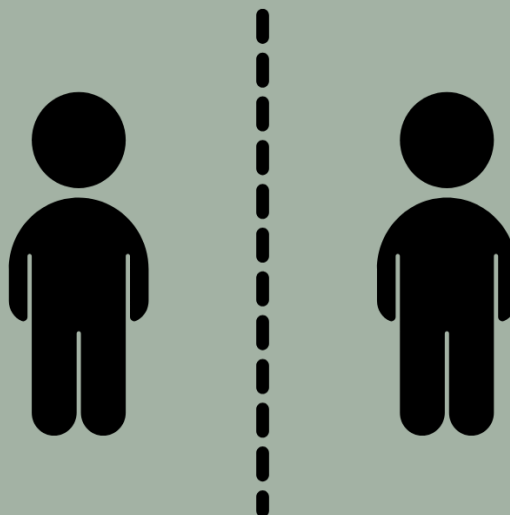
Wear personal protective equipment (PPE). This includes mask, gloves, and glasses/faceshields when appropriate.



Sanitize surfaces and equipment before and after each use.



Sanitize or wash hands with soap and water for at least 20 seconds.



Maintain social distancing when possible.



Working Together

2020 Swine Validation

Swine validation

Early validation Thursday November 5th from 6 PM to 8 PM in the MCJLS Show Barn

Swine validation

Regular validation Saturday November 7th from 9 AM to 12 noon in the MCJLS Show Barn

The mission of Texas A&M AgriLife Extension Service is to improve the lives of people, businesses and communities across Texas and beyond through high quality, relevant education. Educational programs of the Texas A&M AgriLife Extension Service are open to all people without regard to race, color, religion, sex, national origin, age, disability, genetic information or veteran status. The Texas A&M University System, U.S. Department of Agriculture, and the County Commissioners Courts of Texas Cooperating